



Places in the neighborhood



Places in the neighborhood



Places in the neighborhood

a pharmacy

a restaurant

a bank

Copyright © 2011 by Pearson Education, Inc. Permission granted to reproduce for classroom use.

Copyright © 2011 by Pearson Education, Inc. Permission granted to reproduce for classroom use.

Copyright © 2011 by Pearson Education, Inc. Permission granted to reproduce for classroom use.



Places in the neighborhood



Places in the neighborhood



Places in the neighborhood

Cut or Fold

a school

a newsstand

a bookstore

Copyright © 2011 by Pearson Education, Inc. Permission granted to reproduce for classroom use.

Copyright © 2011 by Pearson Education, Inc. Permission granted to reproduce for classroom use.

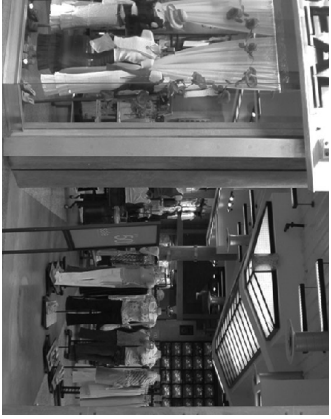
Copyright © 2011 by Pearson Education, Inc. Permission granted to reproduce for classroom use.



Places in the neighborhood



Places in the neighborhood



Places in the neighborhood

Cut or Fold

Copyright © 2011 by Pearson Education, Inc. Permission granted to reproduce for classroom use.

a fire station

Top Notch Fundamentals, Second Edition,
Vocabulary Booster, Unit 3, page 127

Copyright © 2011 by Pearson Education, Inc. Permission granted to reproduce for classroom use.

an electronics store

Top Notch Fundamentals, Second Edition,
Vocabulary Booster, Unit 3, page 127

Copyright © 2011 by Pearson Education, Inc. Permission granted to reproduce for classroom use.

a clothing store

Top Notch Fundamentals, Second Edition,
Vocabulary Booster, Unit 3, page 127



Places in the neighborhood



Places in the neighborhood



Places in the neighborhood

Cut or Fold

Copyright © 2011 by Pearson Education, Inc. Permission granted to reproduce for classroom use.

a police station

Top Notch Fundamentals, Second Edition,
Vocabulary Booster, Unit 3, page 127

a shoe store

Top Notch Fundamentals, Second Edition,
Vocabulary Booster, Unit 3, page 127

Copyright © 2011 by Pearson Education, Inc. Permission granted to reproduce for classroom use.

a toy store

Top Notch Fundamentals, Second Edition,
Vocabulary Booster, Unit 3, page 127

Copyright © 2011 by Pearson Education, Inc. Permission granted to reproduce for classroom use.



Places in the neighborhood

Copyright © 2011 by Pearson Education, Inc. Permission granted to reproduce for classroom use.

Top Notch Fundamentals, Second Edition,
Vocabulary Booster, Unit 3, page 127



Places in the neighborhood

Cut or Fold

Copyright © 2011 by Pearson Education, Inc. Permission granted to reproduce for classroom use.

Top Notch Fundamentals, Second Edition,
Vocabulary Booster, Unit 3, page 127



Places in the neighborhood

Copyright © 2011 by Pearson Education, Inc. Permission granted to reproduce for classroom use.

Top Notch Fundamentals, Second Edition,
Vocabulary Booster, Unit 3, page 127

a gas station

a dry cleaners

a video store



Places in the neighborhood



Places in the neighborhood



Places in the neighborhood

a hotel

a supermarket

a convenience store

Copyright © 2011 by Pearson Education, Inc. Permission granted to reproduce for classroom use.

Copyright © 2011 by Pearson Education, Inc. Permission granted to reproduce for classroom use.

Copyright © 2011 by Pearson Education, Inc. Permission granted to reproduce for classroom use.

Top Notch Fundamentals, Second Edition,
Vocabulary Booster, Unit 3, page 127

Top Notch Fundamentals, Second Edition,
Vocabulary Booster, Unit 3, page 127

Top Notch Fundamentals, Second Edition,
Vocabulary Booster, Unit 3, page 127

Cut or Fold



Places in the neighborhood



Places in the neighborhood



Places in the neighborhood

Cut or Fold

Copyright © 2011 by Pearson Education, Inc. Permission granted to reproduce for classroom use.

a taxi stand

Top Notch Fundamentals, Second Edition,
Vocabulary Booster, Unit 3, page 127

Copyright © 2011 by Pearson Education, Inc. Permission granted to reproduce for classroom use.

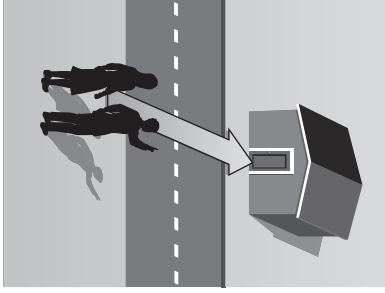
a post office

Top Notch Fundamentals, Second Edition,
Vocabulary Booster, Unit 3, page 127

Copyright © 2011 by Pearson Education, Inc. Permission granted to reproduce for classroom use.

a travel agency

Top Notch Fundamentals, Second Edition,
Vocabulary Booster, Unit 3, page 127

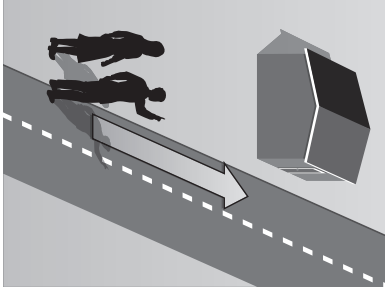


Locations

across the
street

*Top Notch Fundamentals, Second Edition,
Unit 3, page 20*

Copyright © 2011 by Pearson Education, Inc. Permission granted to reproduce for classroom use.

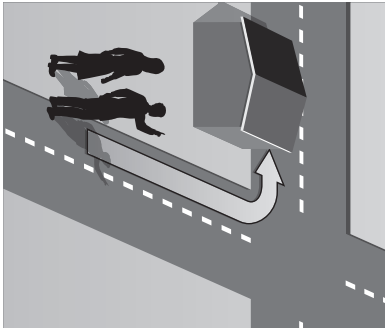


Locations

down the
street

*Top Notch Fundamentals, Second Edition,
Unit 3, page 20*

Copyright © 2011 by Pearson Education, Inc. Permission granted to reproduce for classroom use.



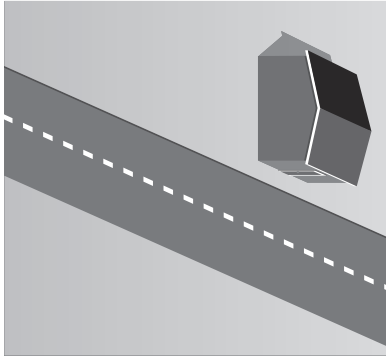
Locations

around the
corner

*Top Notch Fundamentals, Second Edition,
Unit 3, page 20*

Copyright © 2011 by Pearson Education, Inc. Permission granted to reproduce for classroom use.

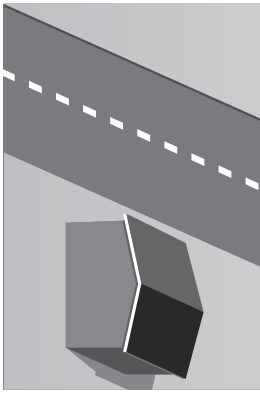
Cut or Fold



Locations

on the left

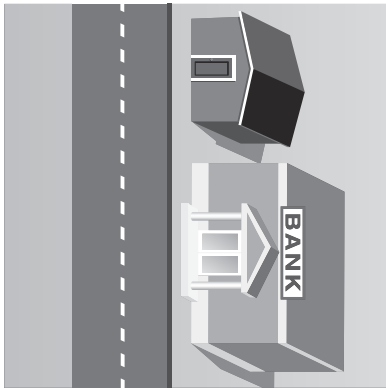
*Top Notch Fundamentals, Second Edition,
Unit 3, page 20*



Locations

on the right

*Top Notch Fundamentals, Second Edition,
Unit 3, page 20*



Locations

next to
the bank

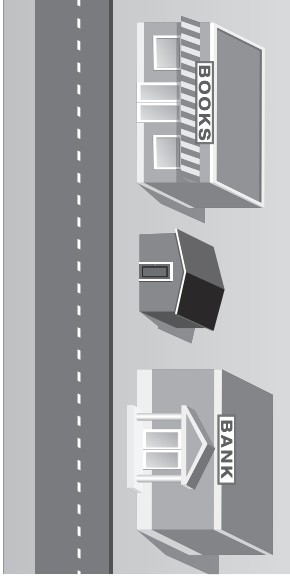
*Top Notch Fundamentals, Second Edition,
Unit 3, page 20*

Copyright © 2011 by Pearson Education, Inc. Permission granted to reproduce for classroom use.

Copyright © 2011 by Pearson Education, Inc. Permission granted to reproduce for classroom use.

Copyright © 2011 by Pearson Education, Inc. Permission granted to reproduce for classroom use.

Cut or Fold



Locations

between the
bookstore and
the bank

*Top Notch Fundamentals, Second Edition,
Unit 3, page 20*

Copyright © 2011 by Pearson Education, Inc. Permission granted to reproduce for classroom use.



Ways to get places

walk

*Top Notch Fundamentals, Second Edition,
Unit 3, page 22*

Copyright © 2011 by Pearson Education, Inc. Permission granted to reproduce for classroom use.



Ways to get places

drive

*Top Notch Fundamentals, Second Edition,
Unit 3, page 22*

Copyright © 2011 by Pearson Education, Inc. Permission granted to reproduce for classroom use.

Cut or Fold



Ways to get places



Ways to get places



Ways to get places

take a taxi

take the train

take the bus

Copyright © 2011 by Pearson Education, Inc. Permission granted to reproduce for classroom use.

Copyright © 2011 by Pearson Education, Inc. Permission granted to reproduce for classroom use.

Copyright © 2011 by Pearson Education, Inc. Permission granted to reproduce for classroom use.

a car

Copyright © 2011 by Pearson Education, Inc. Permission granted to reproduce for classroom use.



**Means of
transportation**



a bicycle

Copyright © 2011 by Pearson Education, Inc. Permission granted to reproduce for classroom use.



**Means of
transportation**



a moped

Copyright © 2011 by Pearson Education, Inc. Permission granted to reproduce for classroom use.



**Means of
transportation**

Cut or Fold

a subway

Copyright © 2011 by Pearson Education, Inc. Permission granted to reproduce for classroom use.

a motorcycle

Copyright © 2011 by Pearson Education, Inc. Permission granted to reproduce for classroom use.

go to work

Copyright © 2011 by Pearson Education, Inc. Permission granted to reproduce for classroom use.

Cut or Fold

Means of
transportation

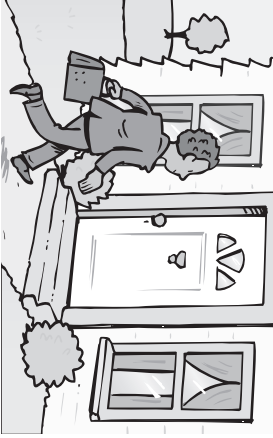


Means of
transportation



Destinations





Destinations

Destinations

Cut or Fold

go to school

go home

Copyright © 2011 by Pearson Education, Inc. Permission granted to reproduce for classroom use.

Copyright © 2011 by Pearson Education, Inc. Permission granted to reproduce for classroom use.